



Epidemic Intelligence

Epidemic Intelligence: Coronavirus sequencing surveillance in Nepal

www.epiintelnepal.org

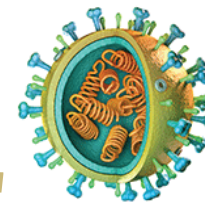
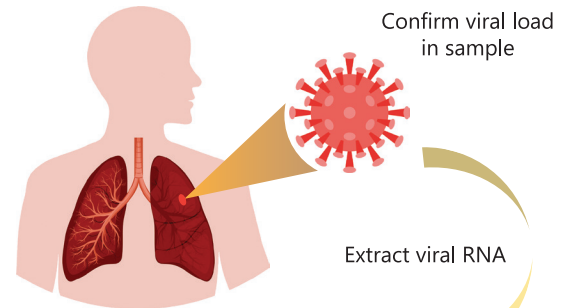


Epidemic Intelligence is a consortium project to improve our understanding of the ongoing transmission of COVID19 in Nepal using whole genome sequencing.

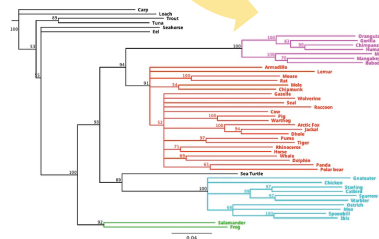
The project will collect and sequence SARS CoV-2 samples from three locations spanning Nepal: Bheri Hospital in Nepalgunj (Far West), Koshi Hospital, Biratnagar (Eastern Nepal) and Sukraraj Tropical Infectious Diseases Hospital in the capital city, Kathmandu (central region).

We will also follow-up the participants at three and six months to understand the frequency and symptoms of long-term complications of COVID-19 illness (known as Long COVID) in the patients.

Recruit COVID-19 patients



Sequence Genomes



Generate phylogenetic tree to understand evolution & transmission of SARS CoV-2 virus in Nepal

PARTNERS

Liverpool School of tropical Medicine, Center for Molecular Dynamics-Nepal, University of Cambridge, Oxford University Clinical Research Unit-Nepal, Birat Nepal Medical Trust, Nepal Health Research Council, Ministry of Health and Population, Bheri Hospital Nepalgunj, Sukraraj Tropical and Infectious Disease Hospital Kathmandu, and Koshi Hospital Biratnagar.

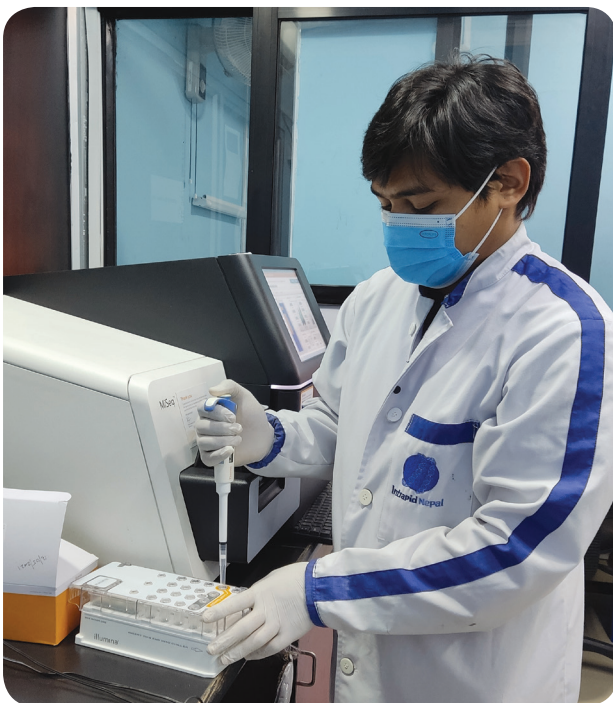
FUNDED BY



www.epiintelnepal.org

EPIDEMIC INTELLIGENCE OBJECTIVES

1. Establish SARS Cov-2 sample bank from three locations spanning Nepal: Kathmandu, Nepalgunj and Biratnagar.
2. Sequence a large cohort of coronavirus samples to understand the different patterns of introduction, seeding and transmission occurring in rural and urban areas of Nepal.
3. Document any introduction and dissemination of newly emerging SARS Cov-2 variants.
4. Analyze demographic and clinical factors associated with circulating strains of SARS Cov-2 in Nepal to understand any variation in virulence associated with genetic variation.
5. Determine the prevalence, risk factors and clinical presentation of LONG-COVID symptoms in the Nepali population.
6. Describe mental health consequences of COVID-19 in a Nepali cohort with confirmed COVID-19 infection.



CONTACT US



BiratNepal



bnmtnpl

Mr Gyanendra Shrestha

Project Manager, BNMT
Mobile: +977 9852023919
Email: gyanendra@bnmt.org.np

Dr Maxine Caws

Principal Investigator
Liverpool School of Tropical Medicine/BNMT
Email: maxine.caws@bnmt.org.np

Mr Raghu Dhital

Acting Executive Director, BNMT
Mobile: +977 9842044672
Email: raghu.dhital@bnmt.org.np